

**Distributed by  
BASF Corporation**

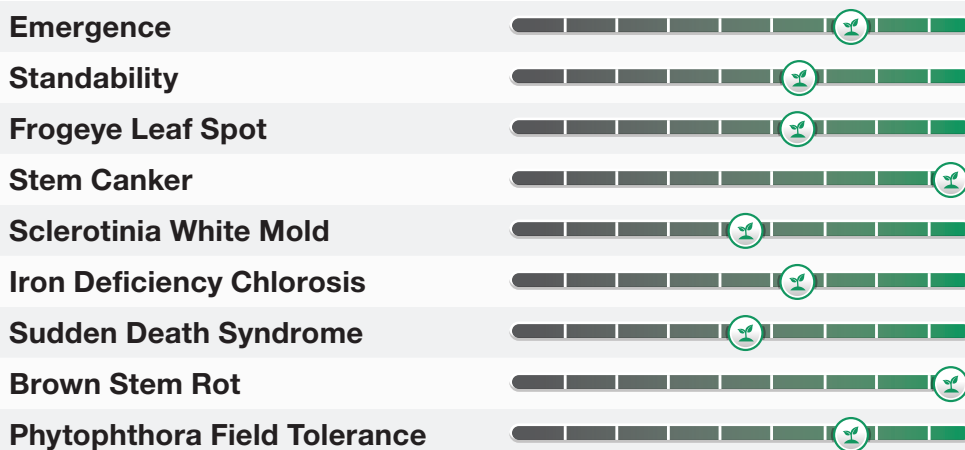


Relative Maturity	2.9
Flower Color	Purple
Pubescence	Gray
Pod Color	Tan
Hilum Color	Imp Black
Seed Size (seeds per lb.)	2850
Plant Height	Medium
Soybean Cyst Nematode	Peking
Phytophthora Source	1k
Sulfonylurea Tolerance	No

**Contact your local Seed Advisor or Seed Agronomist for placement recommendations for your field. Scan this to access the BASF Rep Finder.**



| 9 | 8 | 7 | 6 | 5 | 4 | 3 | 2 | 1



**1:** Excellent. **9:** Poor | **NG:** No Gene Detected | **-:** Testing is currently underway.

© 2022 BASF Corporation. All rights reserved.